



**Mosaico People Pvt. Ltd.**

*Elegant Series of Mosaic Tiles*

**EMAIL:** [raj@mosaicopeople.com](mailto:raj@mosaicopeople.com)

**WEB:** [www.mosaicopeople.co.in](http://www.mosaicopeople.co.in)

**ADD :** C-23, BHARAT VIHAR, DWARKA  
SEC-14, NEAR METRO PILLAR-887,  
DWARKA, DELHI-110075.

2023-2024

**Design Art Concepts**

for Beautification of  
Interior and Exterior Wall

**Mosaico People Pvt. Ltd.**

*Elegant Series of Mosaic Tile*



## **MOSAICO PEOPLE PVT. LTD.**

With nearly 8 Years of experience to boast of in the manufacture and distribution of Glass mosaic tiles, Porcelain mosaic tiles and Stone mosaic tiles .We at Mosaico People understand best the needs of our customers. Over the year, we have accumulated invaluable knowledge about architecture and design trends. Our every effort has been to cater efficiently to the needs of any Job, regardless of size or type in the shortest period of time.

Due to large production capacity we are able to handle large projects in a short period of time. Today Mosaico People's team of in-house designers have accumulated the expertise to custom design gradients, murals and blends to suit every creative need. Our designers can create masterpieces that range from the simple to the most exotic with a large variety of different types of mosaic. Our tiles have stood the test of time under severest of weather conditions.

Mosaico People's journey from its inception to the present day has been exceptionally rewarding. Our tiles can be seen adorning a variety of architectural and interior design projects ranging from exterior facades of buildings, swimming pools, obbies, lounges, bathrooms, subways, fountains, parking areas etc. Most importantly, our growing numbers of satisfied clients can vouch for the fact that we are considered to be the most trusted and reliable brand of mosaic tiles.

S  
D  
T  
U  
O  
B  
A

### GMR Tunnel

New Delhi



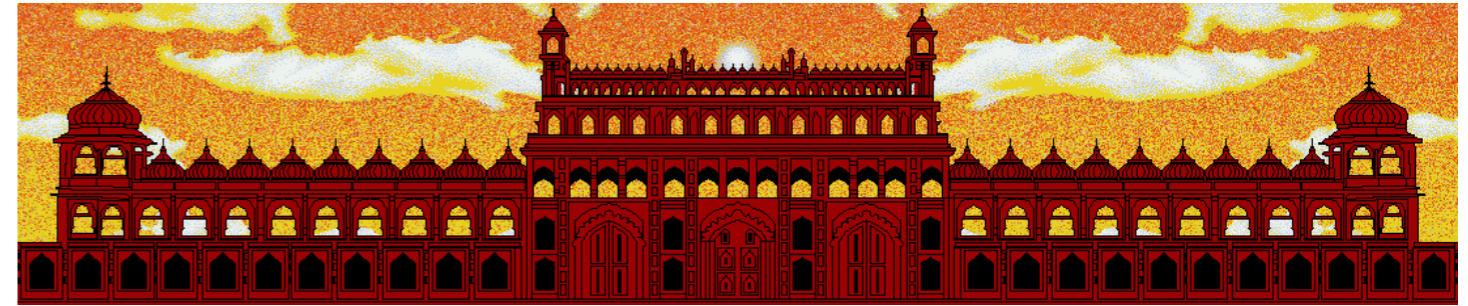
### Vasant Kunj Tunnel

New Delhi



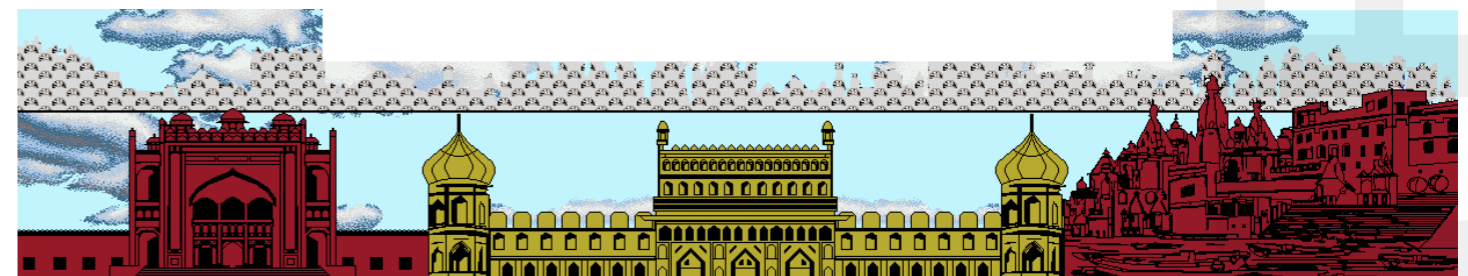
METRO STATION AMAUSI

LUCKNOW METRO



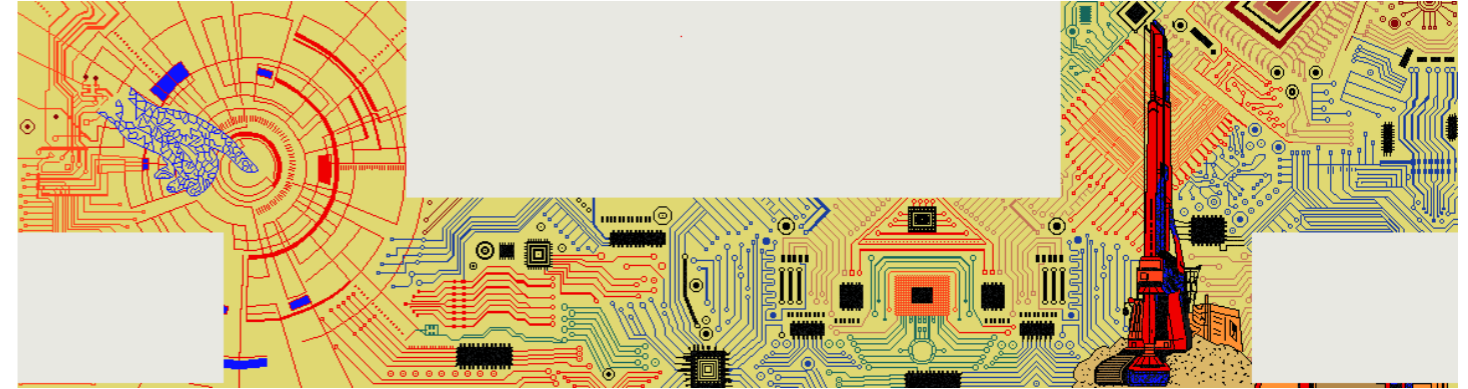
METRO STATION INDIRA NAGAR

LUCKNOW METRO



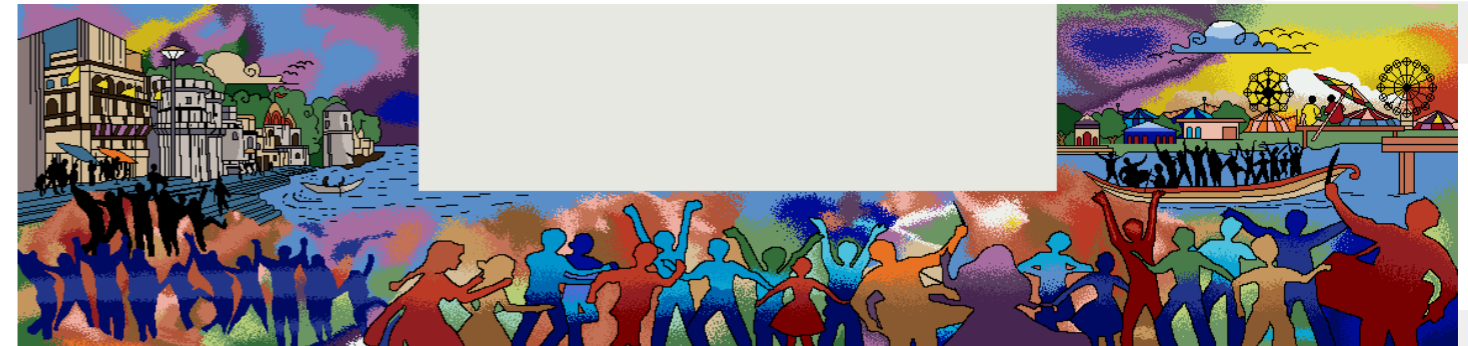
METRO STATION - IIT

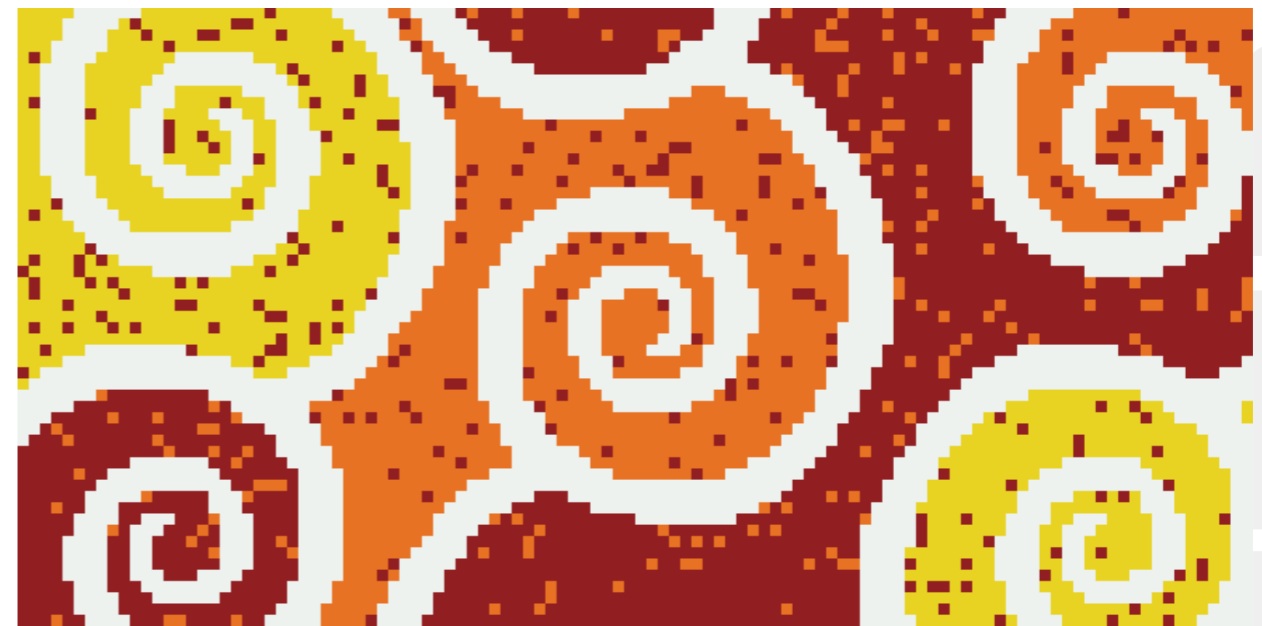
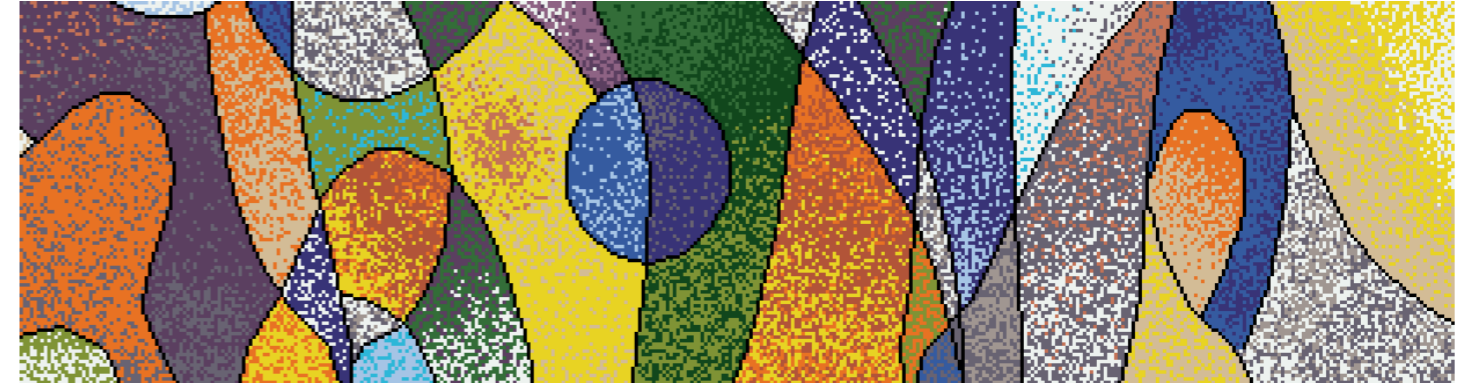
KANPUR METRO



METRO STATION - GURUDEV CHAURAHA

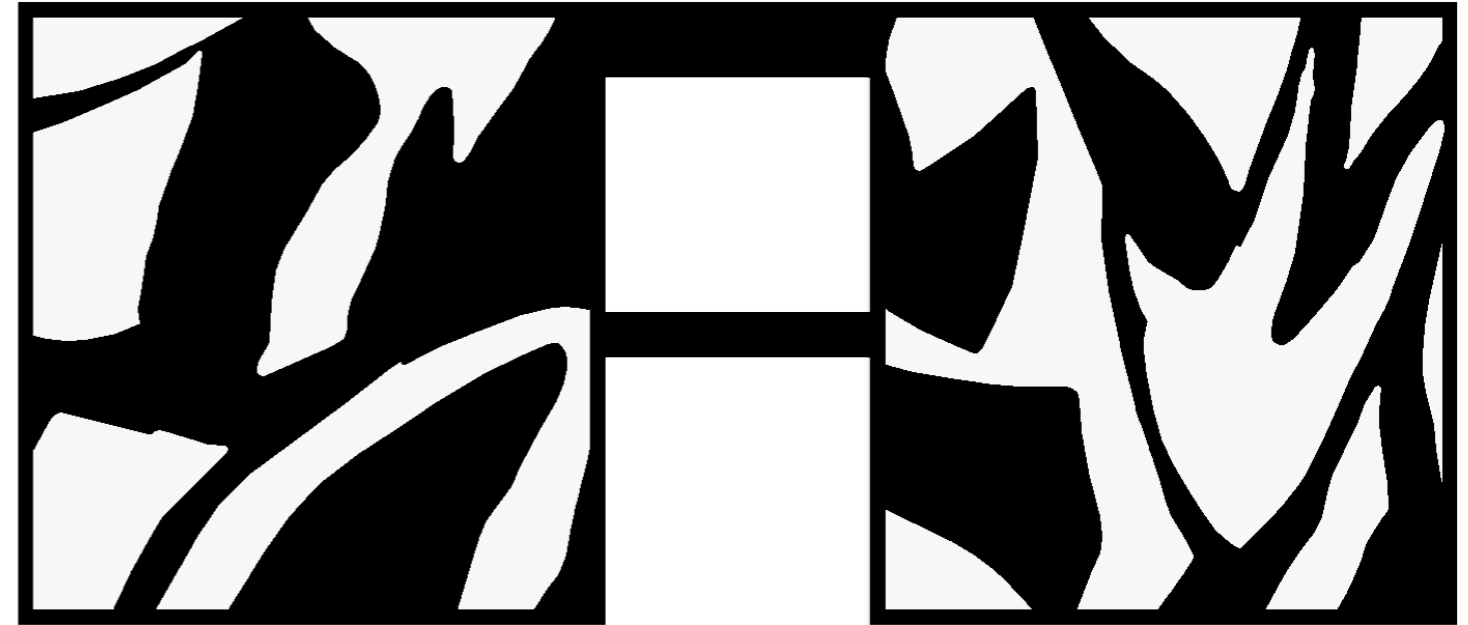
KANPUR METRO





MP  
AERO  
CITY  
METRO

ITC HOTEL-NEW DELHI



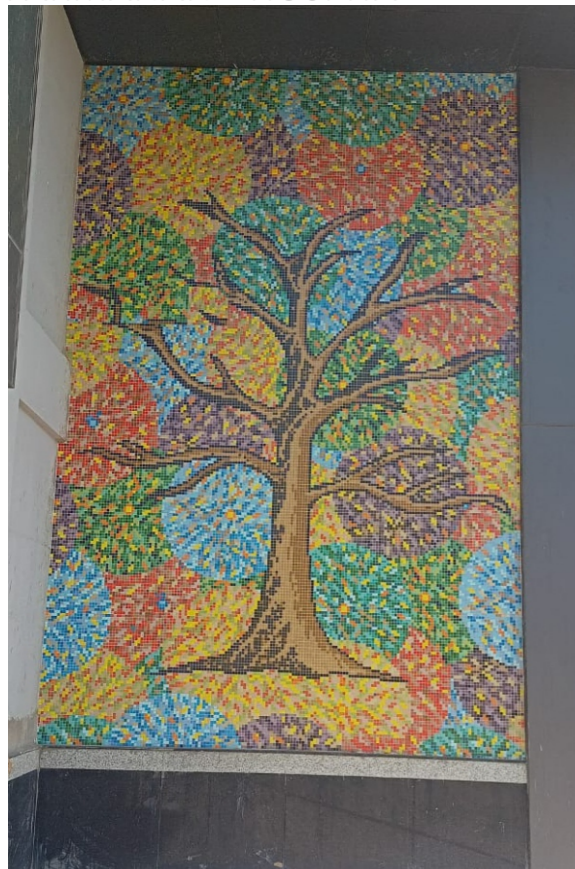
ARIHANT ARDEN- NOIDA



PARMANAND HOSPITAL



PARMANAND HOSPITAL

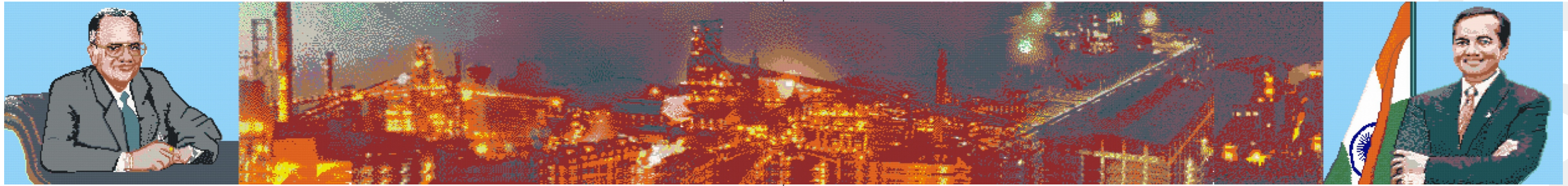


PARMANAND HOSPITAL





JINDAL CITY- CHHATISGARH

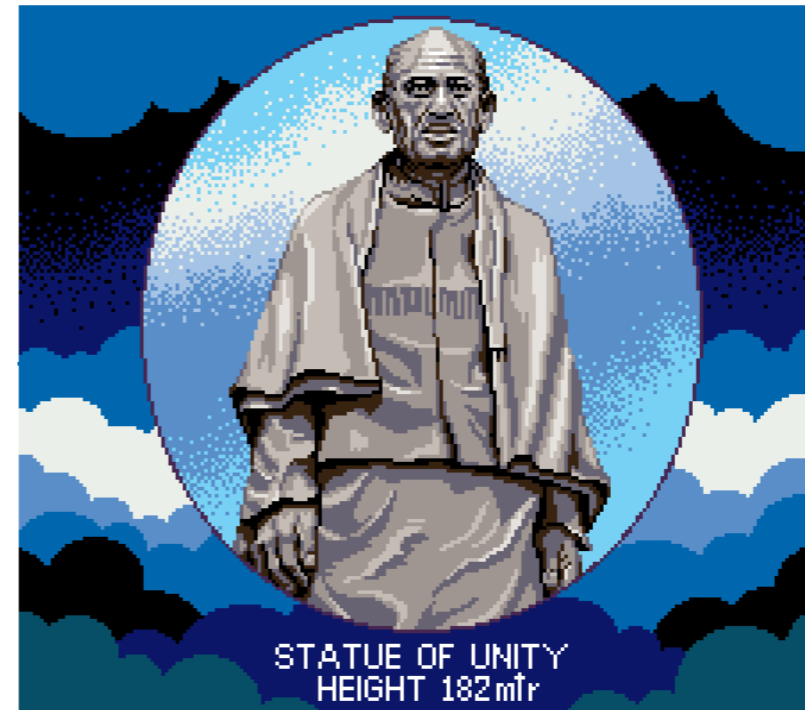
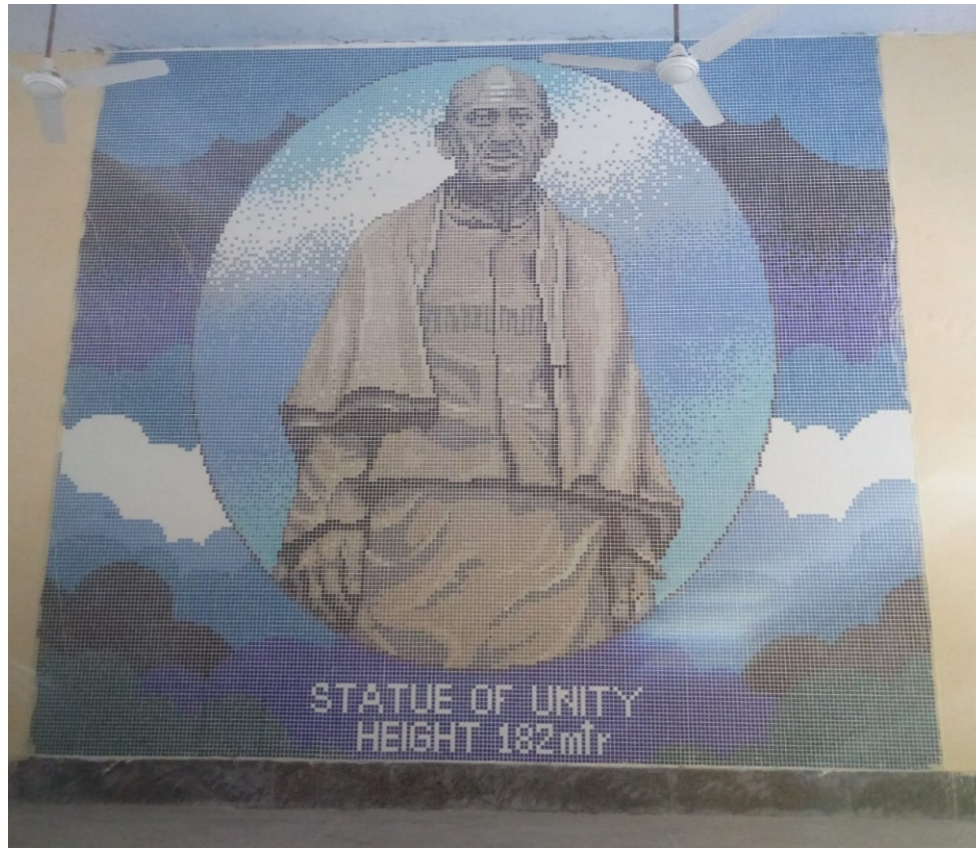


JINDAL CITY

UNINAV APARTMENT-GAZIABAD



UNINAV APARTMENT-GAZIABAD



3D-MOSAIC ART

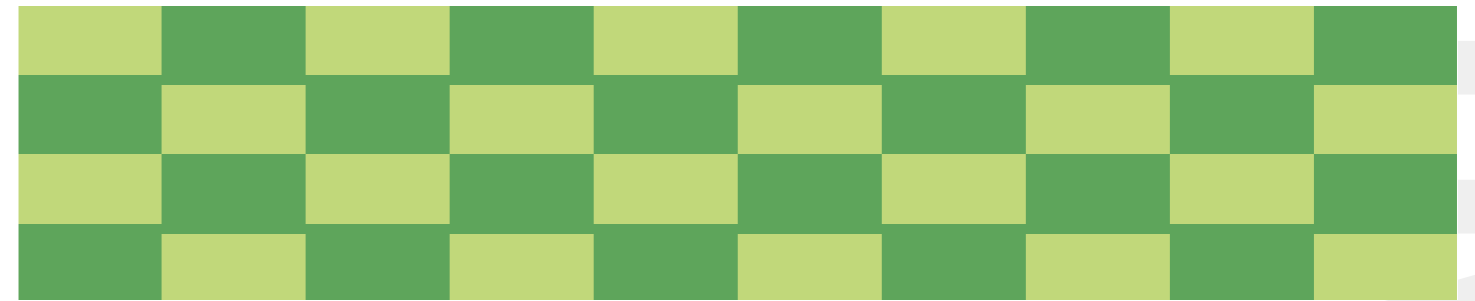
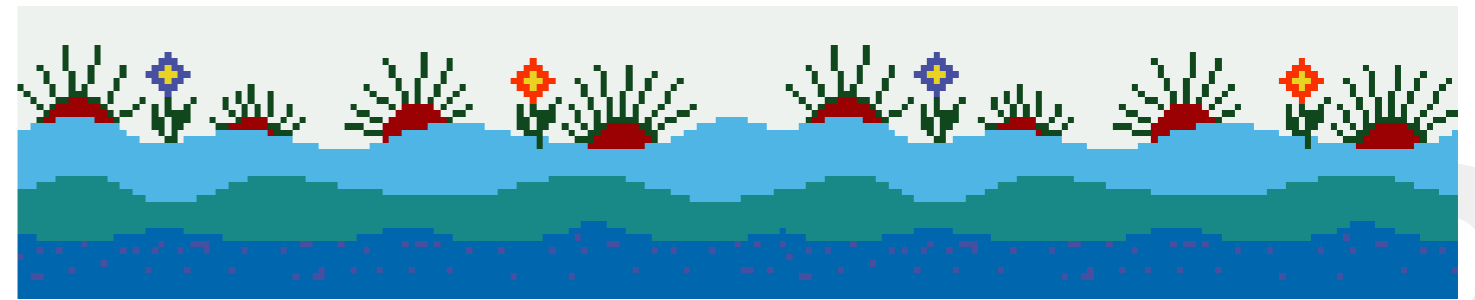


3D-MOSAIC

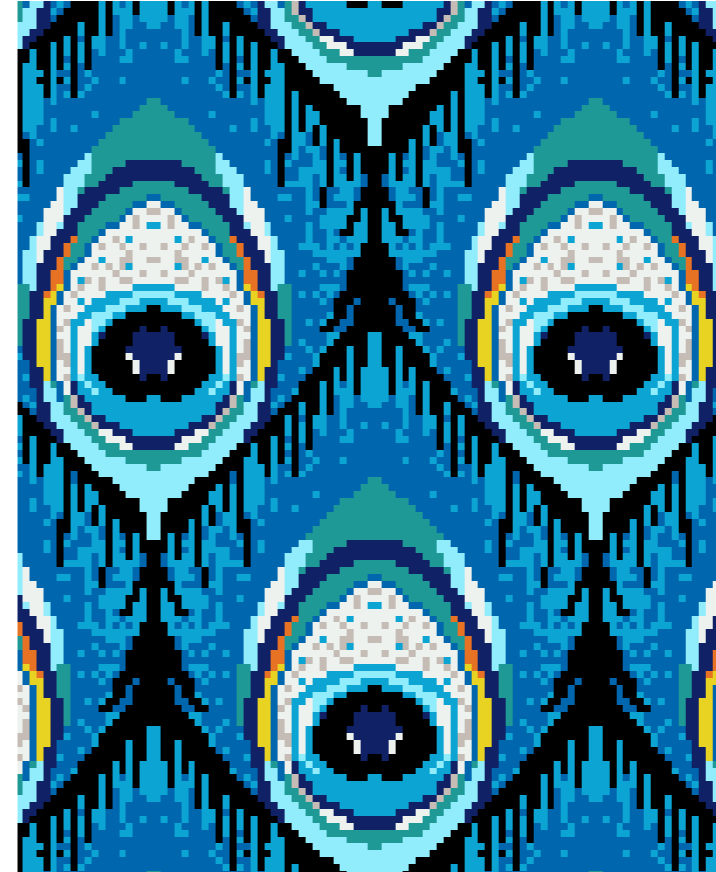
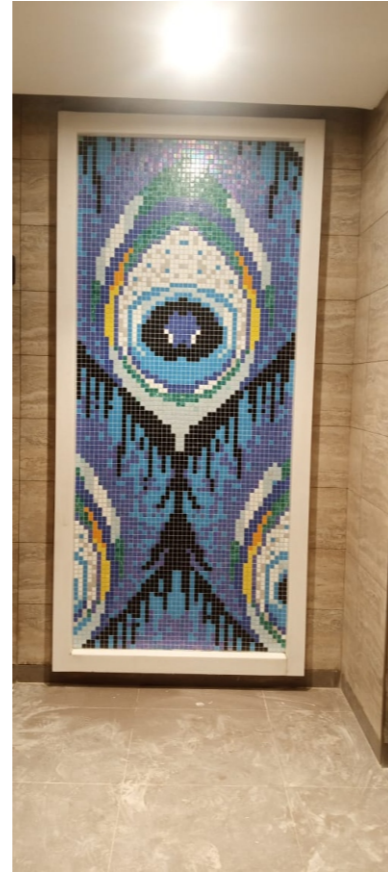
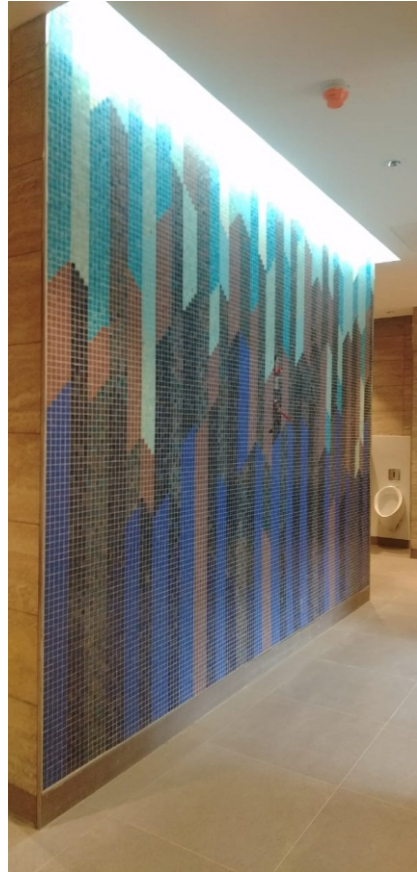
3D-MOSAIC ART



PARK-DWARKA/DELHI

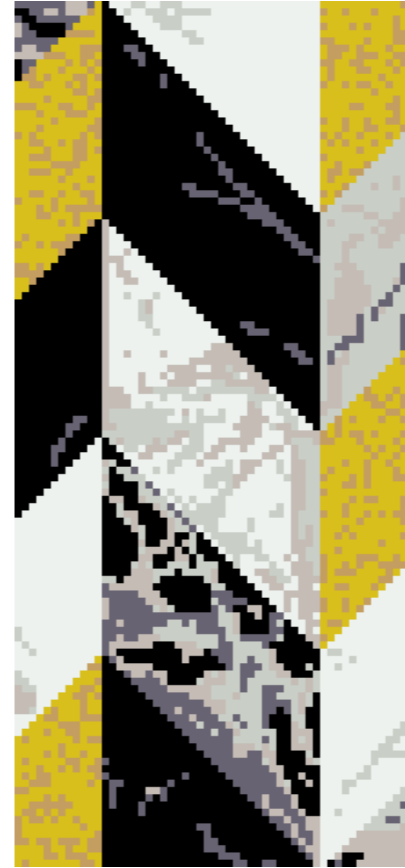
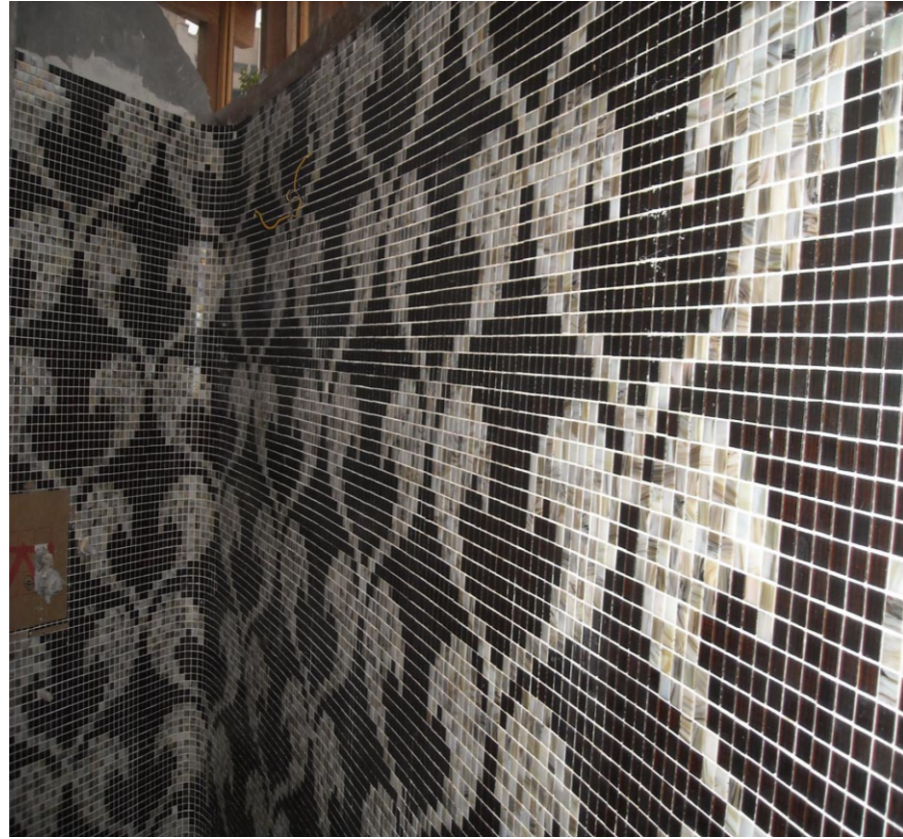
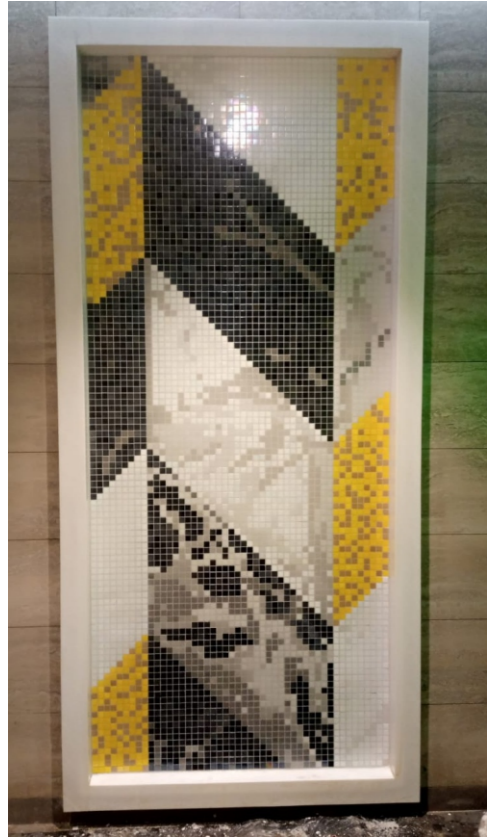


GMR-WASHROOM



WASHROOM

GMR-WASHROOM



WASHROOM



FOUNTAIN

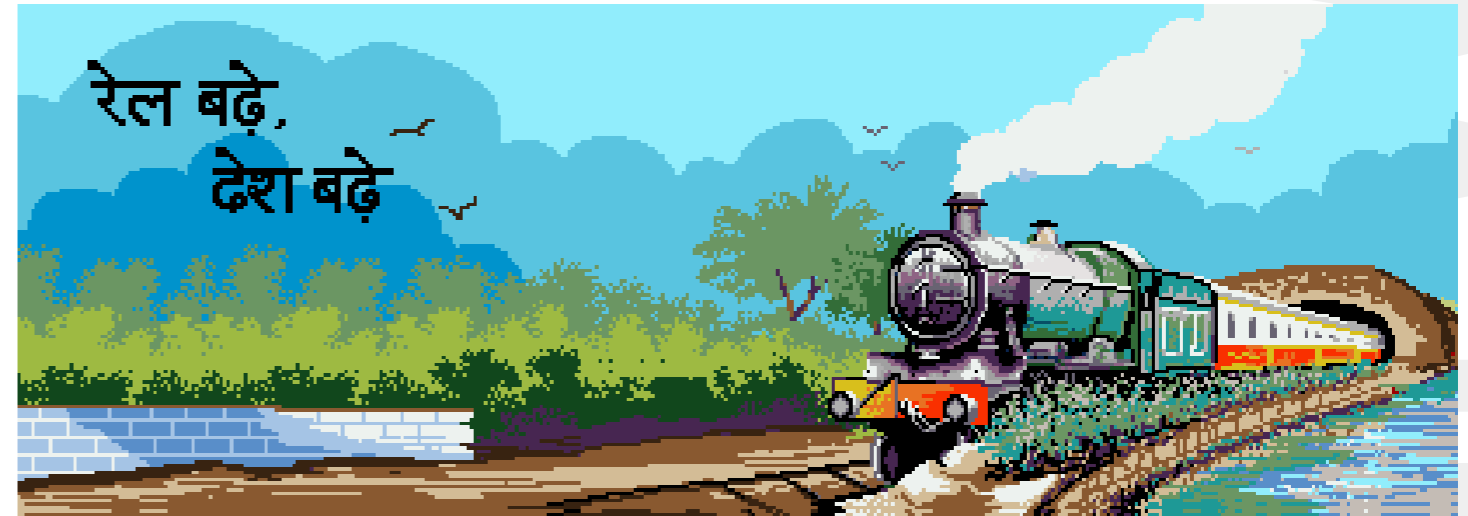
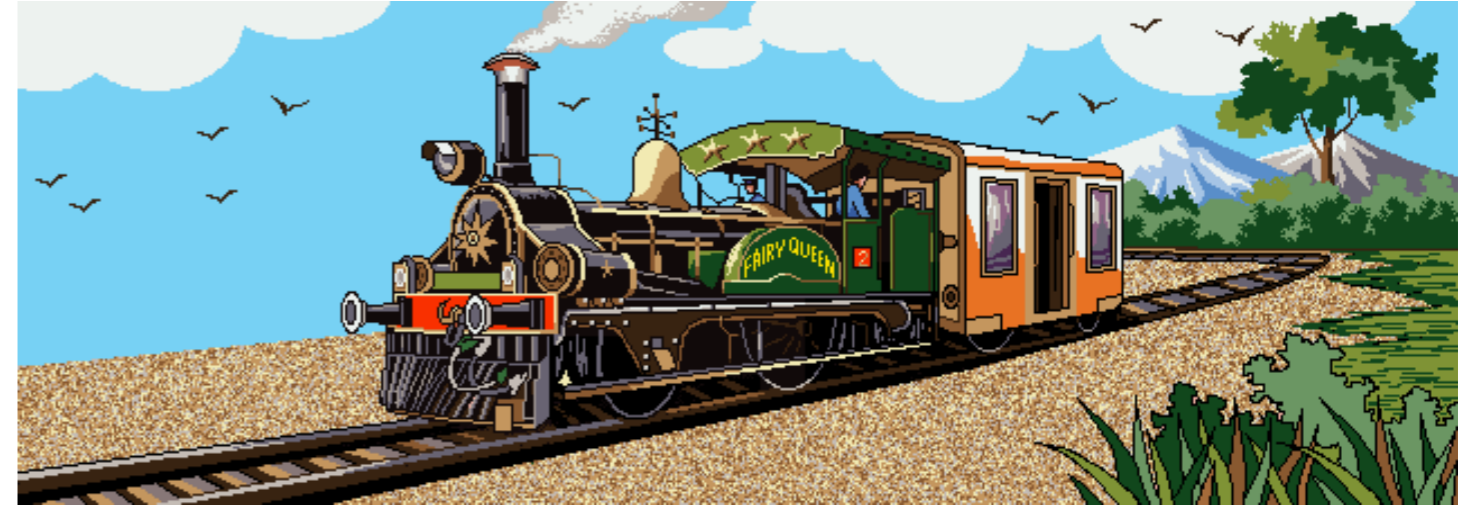


FOUNTAIN

RAILWAY



RAILWAY



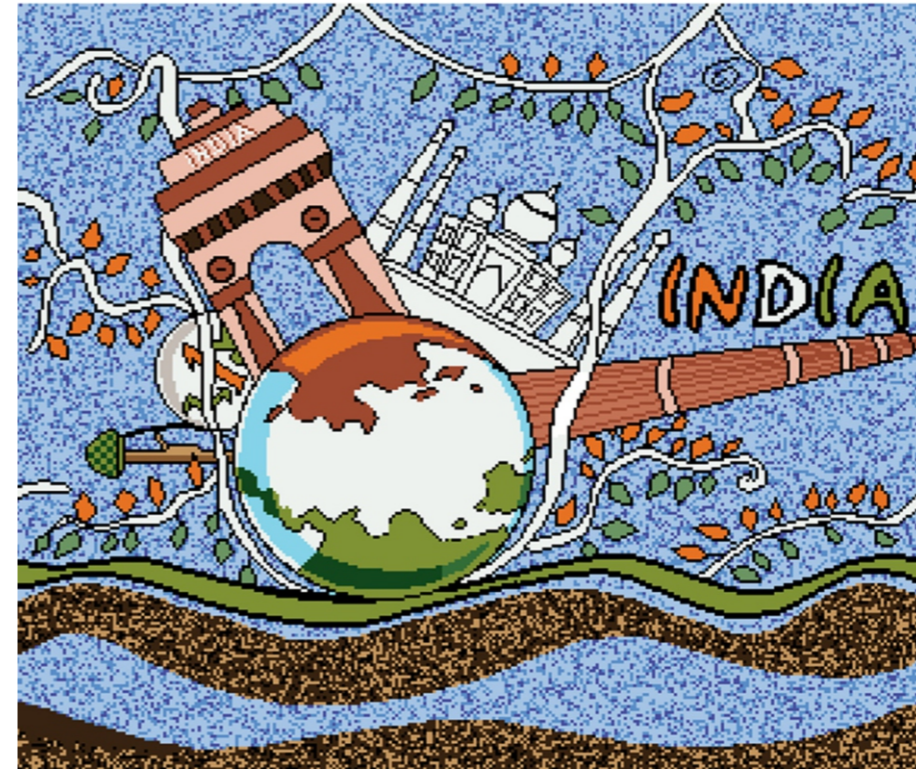
RAILWAY



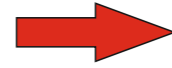
PILLAR - ROHTAK



PILLAR - ROHTAK



### Application Process of 3D Work



### Final Result



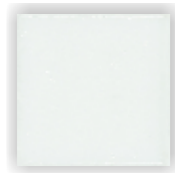
Application Process of 3D Work - Arihant Amber



Final Result







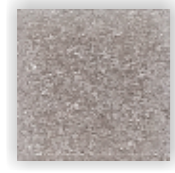
A01



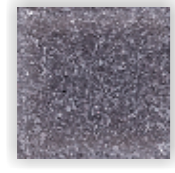
A03



A05



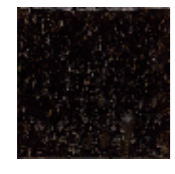
A06



A09



A90



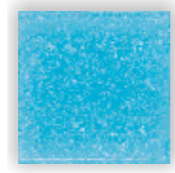
A39



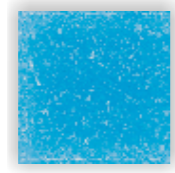
A49



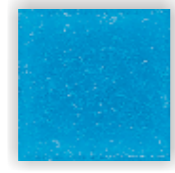
A04



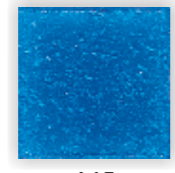
A12



A13



A14



A15



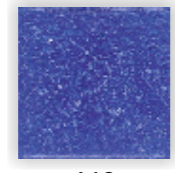
A92



A95



A17



A19



A18



A52



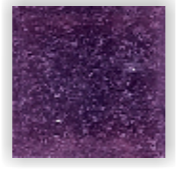
A54



A42



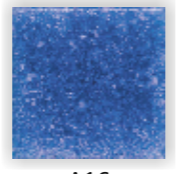
A43



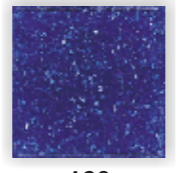
A44



A96



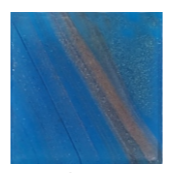
A16



A20



R-01



G-55



G-67



G-06



G-74



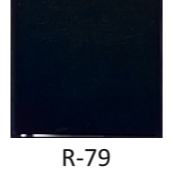
G-75



G-78



R-78



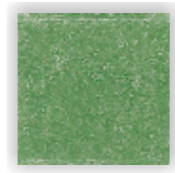
R-79



A21



A60



A22



A25



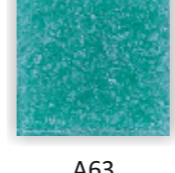
A26



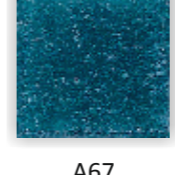
A-00



A62



A63



A67



A30



A32



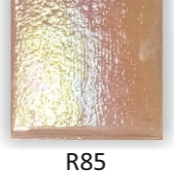
A33



A34



A36



R85



A85



A86



A87



SILVER



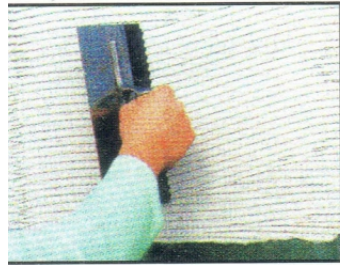
Gold

SHADE CARD

SHADE CARD

## TIPS FOR APPLICATION

It is important that you follow these steps for easy application of CUBE MOSAIC. Our team can also provide you with technical support and information for the application of your tiles. We recommend that a qualified applicator be used for the application of CUBE MOSAIC.



### Step 1. Preparing the surface

The surface to be tiled must be clean, smooth and clear of dust. It must be in plumb and should be dry.



### Step 2. Applying the adhesive

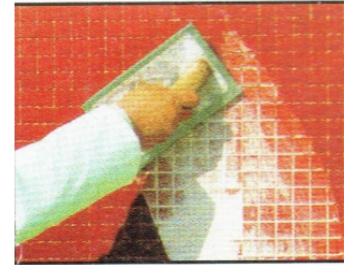
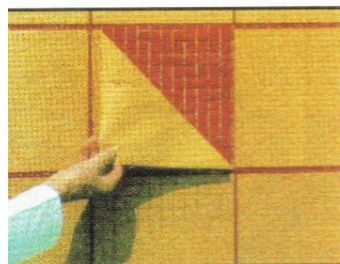
Apply a good quality latex-modified thinset approved for use with mosaic tiles. Be sure to use a thinset that is compatible with your substrate and environment. The adhesive should be thick enough to avoid the mosaic sheets from slipping once placed on the wall. Spread the adhesive uniformly (about 3mm thick) on the wall using the straight edge of the trowel. With the toothed edge of the trowel, comb the adhesive through.



### Step 3. Applying CUBE MOSAICS

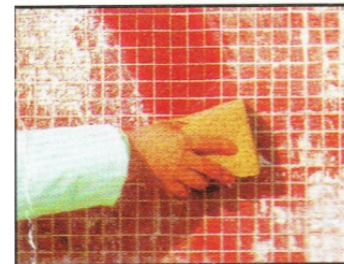
Apply CUBE MOSAIC sheets with the paper side facing up. Press the sheets firmly in one direction. Using a rubber float, tap the sheets. A wooden float may also be used but never a metal one. Check that all sheets are placed at the exact same distance from each other as the tiles.

After the mosaics have started to set, but before they become fully bonded the paper should be removed. Use a damp sponge on the surface of the sheets to ensure easy removal of the paper. Remove the paper carefully by pulling one corner of the paper diagonally across the sheet. This must be done gently to ensure that no tiles are dislodged in the process. Realign any tiles with a spatula and remove excess adhesive at this point. Let the adhesive dry for approximately 24 hours before beginning the grouting process.



### Step 4. Grouting

Use a sponge and warm water to remove any excess adhesive on the sheets. The surface must be free from dust. Using a hard rubber float, spread the grout horizontally and vertically on the mosaic sheets. Cover an area of not more than 2 Sq. mtr. at a time. Remove any excess grout float by working diagonally across the mosaics. After grouting, wait approximately 20 minutes before cleaning the excess grout.



### Important

Allow tile work for exterior application or in areas subject to prolonged water immersion such as pools, fountains, spas, etc. to cure for 20 days before exposing to immersion.

APPLICATION TIPS